

APRIL 2017



President's Message



I am packing for our next Bicycle-Postcard trip! I thought you might like to know what I'm packing for the painting I do along the way. Here goes.

When I paint: On previous trips, when we have done it all ourselves, that is, make all the travel plans, cities, hotels, cars, meals, etc., it meant that we had our own time (once we got there). I could choose a site, paint away and Peter could sit with me or wander off. With these bicycling tours, or any tours for that matter, I have to tell the tour leader when I will be painting on the tour, and not to forget me when they leave in the van or on bicycle. When bicycling, I always carry just the paper and a pen and pencil. I don't use paints until I get back. I have to rely on my eye or the iPhone camera to remember

colors. I may wander off but I will keep an eye out for the tour. Once when we were in a van going from the desert to Marakech, we stopped for a break. The tour group went up to see a ruin and I painted it. They waited on me a few extra minutes and then, back in the van, everybody looked (with awe and wonder, of course) at what I was painting!

How I get water: I get water anywhere I can. I do not take it with me because that would be heavy. I have bought bottled water from a vendor and – after drinking container in half. When I've used the rest of the water, I go to a source – a little store, a fountain. I have never had a store-keeper turn me down when I asked to fill up my cup. They usually want to see what I am painting, a fair exchange!

What I take: I have decided for this trip to take my hard metal container bought years ago. It has a place for the equipment and for the pallet. It is closable and pack-able. I slip in my Swiss Army knife too (never go without one). With security like it is today, I mark the box with a label that says “art supplies.” What else could a metal box buried in the suitcase possibly be? On some previous trips I have used a soft carrying case with all the supplies – but it does not have a pallet.

What I paint on: I have used beds, windowsills, floors, desks, tables outdoors under the shade, and laps! I usually use my lap and sit any available place; if there is no place and the sun or the view is not right – I punt! I watch the clock and the bicycling tour group or the van, or maybe make them wait a bit!

How to mop up: I have taken toilet paper from a room. I have used paper napkins (fellow diners are willing to give me theirs). This time I am taking some paper towels in my metal carrying case. Why not? So there you have it: how-to pack for a Postcard-Painting trip. We haven't talked about the post office or the stamps or the language, but I think I will save this for another time. Maybe you will give it a try!

Officers for 2016/2017

George Wittenberg	President
Annette Garner	President-Elect
Cheryl Hall	Treasure
Sue Buford	Secretary

Meetings are held at the

**ARKANSAS ARTS CENTER
9th & Commerce / MacArthur Park
Little Rock, Arkansas 72203
Use the south entrance**

**Meetings start at 7 pm but come early for
the social hour with cookies and drink.**

MARK YOUR CALENDARS

April 2017

- 16 Last day of 46h Annual Exhibit
- 17 10-3 pick up paintings from AAC
(shipped paintings returned by AAC)
- 19 5:30 Board Meeting
7:00 Member meeting
Richard Stephens Demonstration

May 2017

- 17 5:30 Board Meeting
7:00 Member meeting

UPCOMING WORKSHOPS

MSW workshop policy is to offer two 3-4 day workshops each year using non-member instructors.

These workshops are lined up for the future.

Make your plans now.

October 2017	Kathleen Conover
March 2018	Iain Stewart
October 2018	Lori Goldstein Warren
Spring 2019	Michael Bailey

If you have any suggestions for future workshops, please contact Paula Kalina at ptkalina@hotmail.com

WAYS TO BE IN TOUCH

WEBSITE:

www.midsouthernwatercolorists.com

On the website you can find the latest VIEWS, information about workshops and exhibitions, and see galleries of past exhibition paintings by members.

GOOGLE GROUP: With membership you will receive announcements, information and the newsletter via this group. If you are NOT receiving it in your email, either check your spam folder or contact Marlene Gremillion to ensure she has your correct email information.

FACEBOOK: We are on Facebook, just go and "like" us!!!

DIRECTORY: Be sure that MSW has your correct information. Contact Marianne Hampton if you have had any changes.

NEWSLETTER: Our newsletters are available online through our website and received through the GoogleGroup system. If you wish to add to the newsletter please send info to sandymarson44@comcast.net

REGIONAL ADVISORS: We have several members from throughout the state and

Sarah Merkle- El Dorado includes Union, Ashley, Chicot, Drew, Bradley, Calhoun & Northwest Louis.

Linda Larey- Texarkana, TX includes Columbia, Ouachita, Sevier, Miller, Little River, Lafayette, Hempstead, Nevada

Mary Ann Stafford includes Pulaski

Judy Coffey-Houston, TX, advisor at large

Charlotte Rierson - Fairfield Bay includes Cleburne, Van Buren and Stone

Janis Gill Ward - Fayetteville includes Washington, Benton, Carroll, Madison

Kay Aclin -Ft. Smith includes Crawford, Sebastian, Franklin, Logan, Johnson

Gloria Garrison- Russellville includes Pope, Newton, Yell, Scott

Sheila Parsons- Conway includes Perry, Conway, Faulkner

Sandy Barksdale - Cotter includes Boone, Marion, Baxter, Fulton, & Southern Missouri

Sue Coon- Mt. View includes Searcy Izard, Stone Sharp, Lawrence, Independence, Jackson

Sally Papich - Jonesboro includes Randolph, Clay, Greene, Poinsett, Craighead, Mississippi, Crittenden

Sue Buford MSW Secretary

So much of my life had been spent doing the things necessary to fulfill a role of daughter, wife and mother. I always knew I wanted to have a hobby doing something rewarding and fun and finally in 2011 the window of opportunity was open. Don and I had moved to Benton, Arkansas the previous year from Texas.

One Sunday at church, I had noticed in the class directory that one of the members was a watercolor artist. I asked about her hobby and that conversation with Annette Garner lead me to a whole world of fun and

challenging watercolor. Annette has become my mentor and my closest friend. My Mother did beautiful oil paintings, but oil painting is just not my style or interest. I never wanted to paint anything other than watercolors. I love the flow and excitement of watercolor. The feeling of freedom as I'm painting is so much fun. I find myself dancing to the music as I'm splishing and splashing at the kitchen table, the best place for the light.

I paint as often as I can at the Otter Creek library with Annette and some other ladies. We share our grandchildren stories and encourage each other in our current painting project. In closing I will say that I have been blessed to have found watercolor and the tremendously talented artists in MSW. The best part of my week has to be when granddaughter Abigail age 7 comes over and says "Gram Lets Paint." Life doesn't get much better than that.



IN APPRECIATION

The 47th Annual Mid-Southern Watercolorists Juried Exhibition is drawing to a close on April 16th. It is hoped that each of you have had the opportunity to personally explore the display of the accomplished works chosen by our juror Michael Holter. You have each received a copy of the exhibition catalogue for which we wish to recognize the generous in kind gift of River City Print and Imaging in support of this beautiful publication.

We owe deep appreciation to all the artists who entered their works for consideration as well as those who were chosen. Further this year, the total membership should be aware of the support of our art suppliers. For the first time, joining the continued the Arkansas Art Materials Award sponsored by Art Outfitters and Golden Paints were the new Blick Art Materials Award and the Cheap Joe's Art Stuff Award. As you seek to renew your art materials we hope you will express your gratitude to those who have made these contributions to our organization's efforts to provide a stellar presentation of water based art to our membership and the community of Arkansas.

Friends and members of MSW made personal contributions to the exhibition. These gifts are essential to our efforts to produce this quality exhibition. Entry fees contribute less than 20% of the total cost of the exhibition. We are indebted to each of those who gave generously to the exhibition. One special innovative gift deserves special recognition. Before leaving Arkansas last spring, Ann Lyon donated a multitude of art books to MSW, the total proceeds from her book sale were donated as a cash gift to this year's exhibition. In addition we continue

to benefit from her generosity as we have a raffle at each of our monthly meetings of several of the remaining books she has given, these funds will be the first gifts to next year's exhibition.



Michael Holter NWS, TWSA, OPS, SWS, SWA

Visit me on

Facebook <https://www.facebook.com/michael.holter>

Or on my website <http://michaelholter.com>

To inquire about attending a workshop

Email to michael@michaelholter.com

To book Michael for a future workshop

Call at 972.965.2078 or email me.

To inquire about purchasing art

Contact Michael or one of the Galleries. **Thunder**

Horse Gallery

Ruidoso, NM

575.257.3989

Willowbrush Gallery

Tulsa, OK

918.301.2718

Comments from Michael Holter Workshop

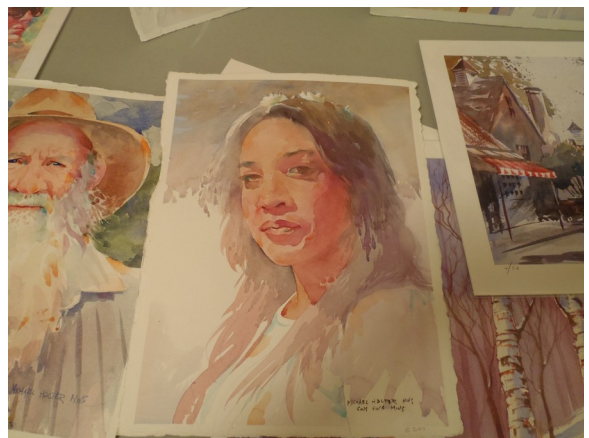
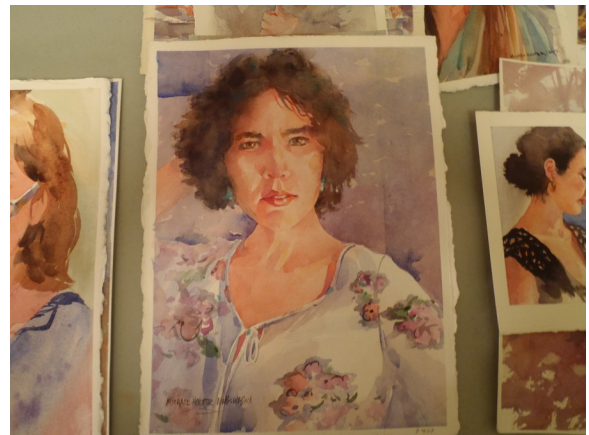
Paula, I just want to join everyone in thanking you for a wonderfully organized workshop. We all appreciate all the work you do to make these events the pleasure that they are to the participants. Peyton

Thank you, Paula! Your hard work was evident and I enjoyed every day. I am ready now to apply the lessons at home at a slower pace. It was inspirational and instructive. Sara

Paula thank you so much for all you did to organize this workshop. You were awesome and it was awesome. Angie

Thank you all for a great workshop. I appreciate all your help throughout and cleaning up. I hope to see you in upcoming workshops and at MSW meetings. Paula

Photos of Working Artist





The **International Experimental Artist Society (ISEA)** will open an on-line exhibitions April 20, 2017. Check it out.

Congratulation to Pat Langewis on being accepted into the Southern Watercolor annual show. This acceptance gives Pat signature status in Southern Watercolor Society. Pat lives in Hot Springs Village and is a Signature Member of MSW.



Sandra Marson is currently showing of fourteen acrylic abstract paintings on canvas at the First Security Bank of Clinton. The show will be on exhibit through April.



"The Ukulele Player"



"Autumn Nights"

"In our time there are many artists who do something because it is new; they see value and their justification in this newness. They are deceiving themselves; novelty is seldom the essential. This has to do with one thing only; making a subject better from its intrinsic nature." Henri de Toulouse Lautrec

March 9, 2017

Ms. Lyn Whaley
Annual Exhibit Coordinator
Mid-Southern Watercolorists
P. O. Box 55762
Little Rock, AR 72215

Dear Lyn:

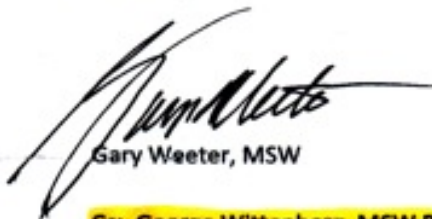
Yesterday, my wife and I, along with some friends, visited the Mid-Southern Watercolors 47th Annual Exhibition at the Arkansas Arts Center. What a wonderfully presented exhibition!

I know that you were instrumental in obtaining all of the artist's statements that accompanied each painting. That special touch enhanced the educational value and viewing pleasure all who visited the show. The statements were so very informative, and to be able to learn what inspired each artist in the creation of their painting was a special bonus and made the visit quite memorable.

The entire exhibition was first-rate, and should make the Arkansas Art Center very proud to have Mid-Southern Watercolorists exhibit there.

Thank you for your work and dedication.

Sincerely,



Gary Weeter, MSW

Cc: George Wittenberg, MSW President MSW
Sandra Marson, Views Newsletter

